

Wide Dynamic Range up to 140dB

Near Infrared Imaging up to 1700nm

320 x 256 Pixels Resolution

Ease your design with Native WDR™



Key Features

- **Native WDR™:** Intrinsic wide dynamic range
 - no knee points to setup or multiple exposures
 - 140 dB in a single shot.
- **High QE InGaAs** from 900nm to 1700nm
- **QVGA resolution**, 320*256 effective pixels, 25 µm square pixels, 10.1 mm diagonal
- **User friendly windows based (GUI)**
- **USB 2.0 interface** for power and data transfer

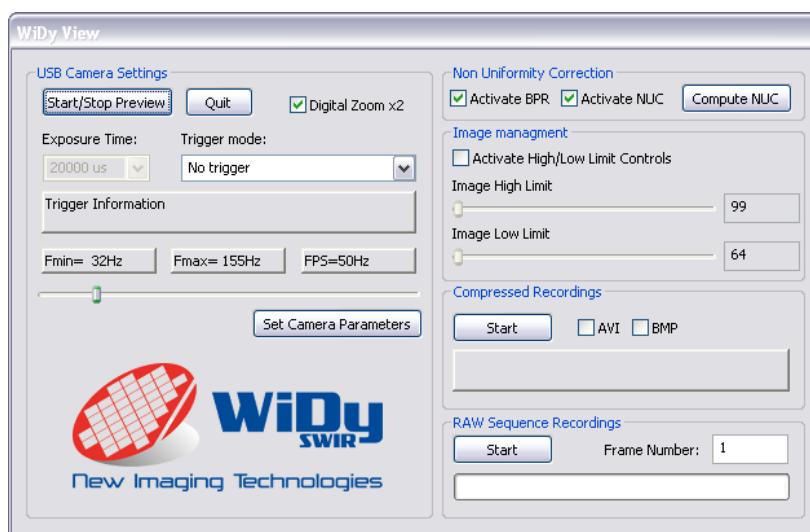
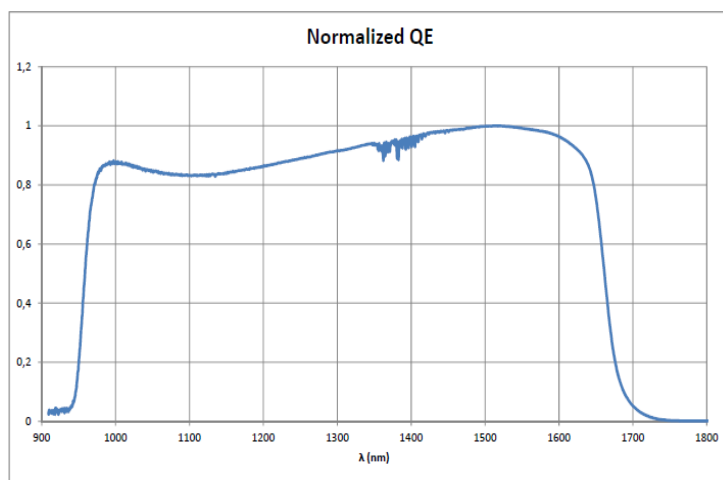
Applications

- **Laser imaging**
- **Instrumentation and measurements**
- **Semiconductor inspection**
- **Spectroscopy**
- **Waste management**
- **Medical imaging**

The WiDy SWIR camera is a near Infrared camera specially designed for R&D, quality areas and laboratories who are looking for Wide Dynamic Range, CIF resolution, reliable and ease of use solution in NIR imaging. WiDy SWIR camera makes use of NSC0803-SI sensor, delivers digital videos via USB 2.0 interface and can be triggered. It is delivered as a turn-key package including camera, cables and MAGICView software package allowing thus a quick and easy integration in any vision or lab environment.

Technical Specifications

- **Sensor:** NSC0803-SI
- **Resolution:** 320x256 pixels
- **Materials:** InGaAs
- **Pixel size:** 25umx25um
- **QE:** 70%
- **Dimensions:** 46 * 46 * 32 mm
- **Data output :** 14 bits USB 2.0
- **Dynamic Range:** >140dB
Logarithmic response
- **Lens mount :** CS (C or S-mount option)
- **A/D converter:** 14 bits
- **Frame rate:** up to 150 fps
- **Compatibility** Windows XP/Win Vista/
Win 7
- **Operating Temp:** 0 °C to + 50 °C



Widy View Software